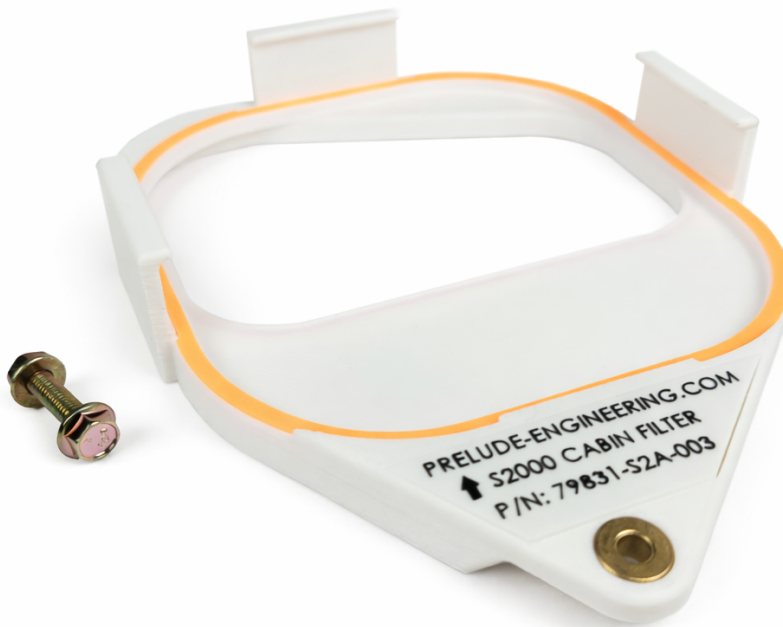


PRELUDE

— ENGINEERING LLC —

PRELUDE-ENGINEERING.COM

88-91 Prelude Cabin Filter Conversion



Remove the rear hood seal by squeezing the clips with some pliers and pushing/pulling upwards.



The end/side of the cowl has 2 plastic screws you will need to remove next to loosen it.



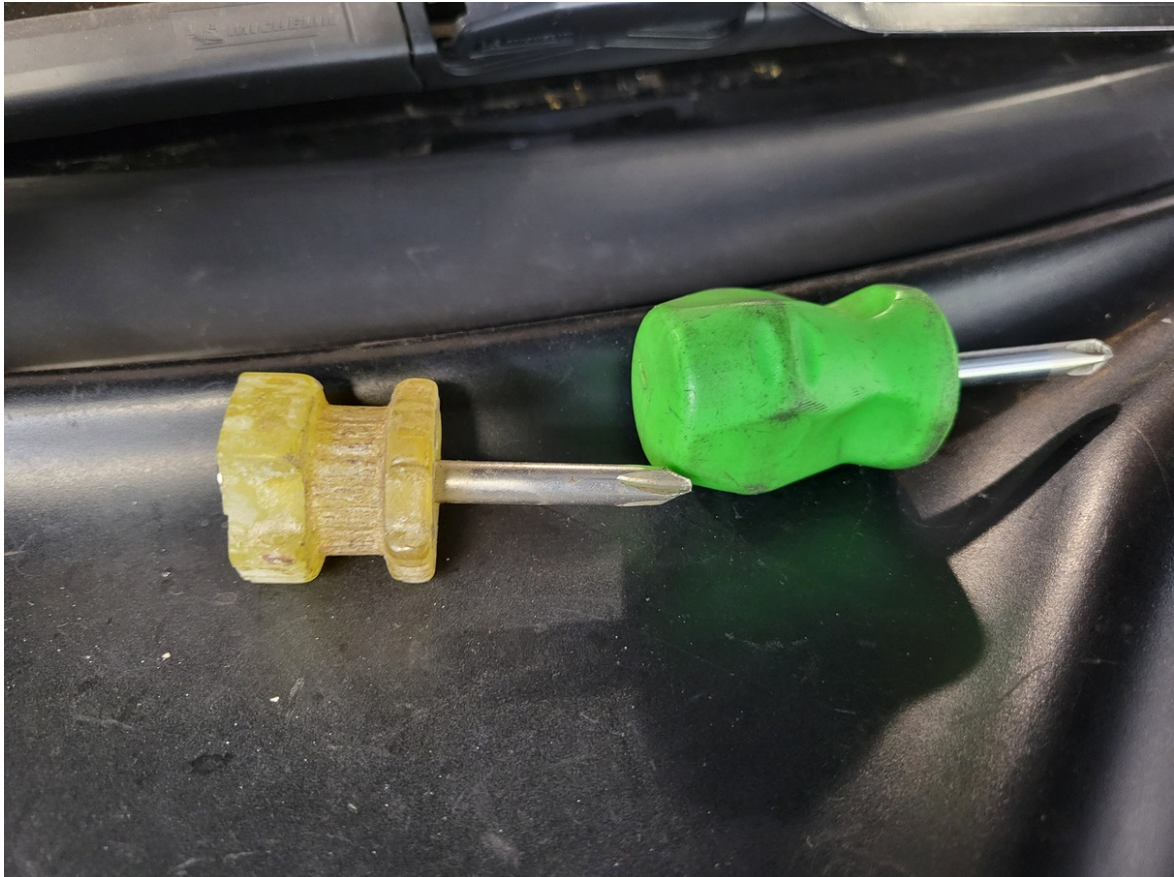
Now lift up the front of passenger side cowl and use a block of wood or some other object to prop it open while you work:



This next step isn't strictly necessary. This product can be installed without cutting anything. You can trim the front lip of the cowl up a ways to give you more room to work. It also makes future filter changes easier:



For the next step you will want a stubby Phillips screw driver or some other short Phillips setup:



Unscrew the factory plastic screw that is holding the blower inlet cover on:



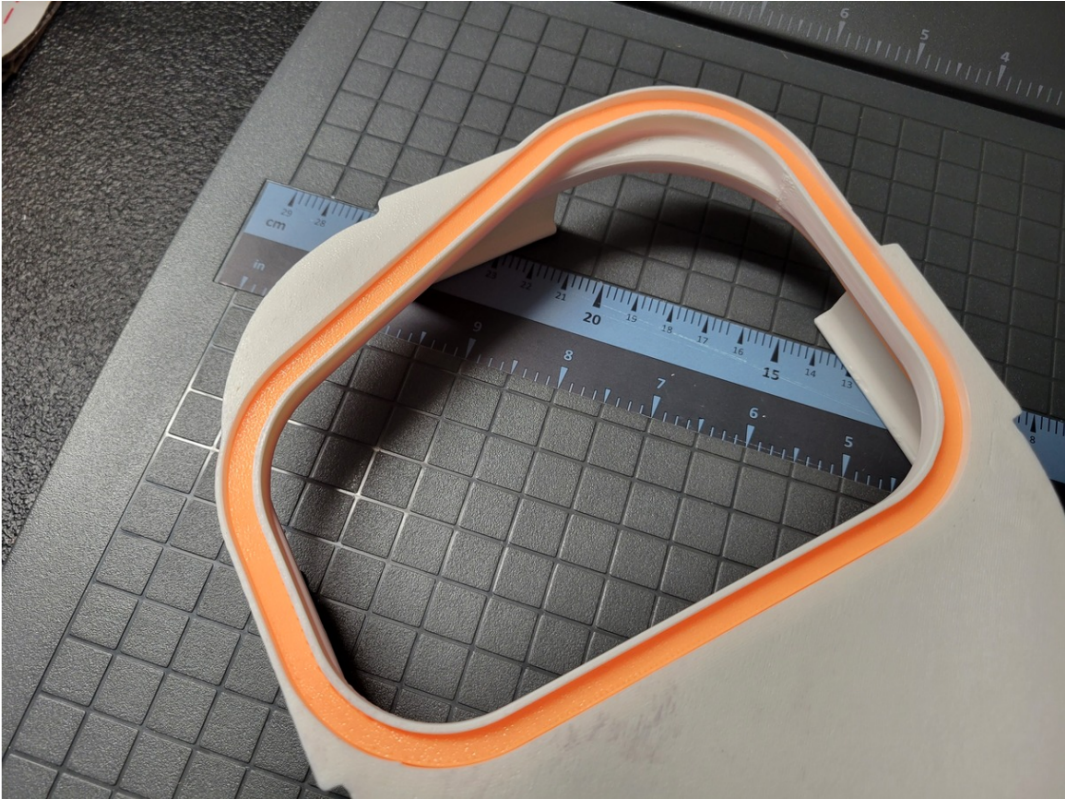
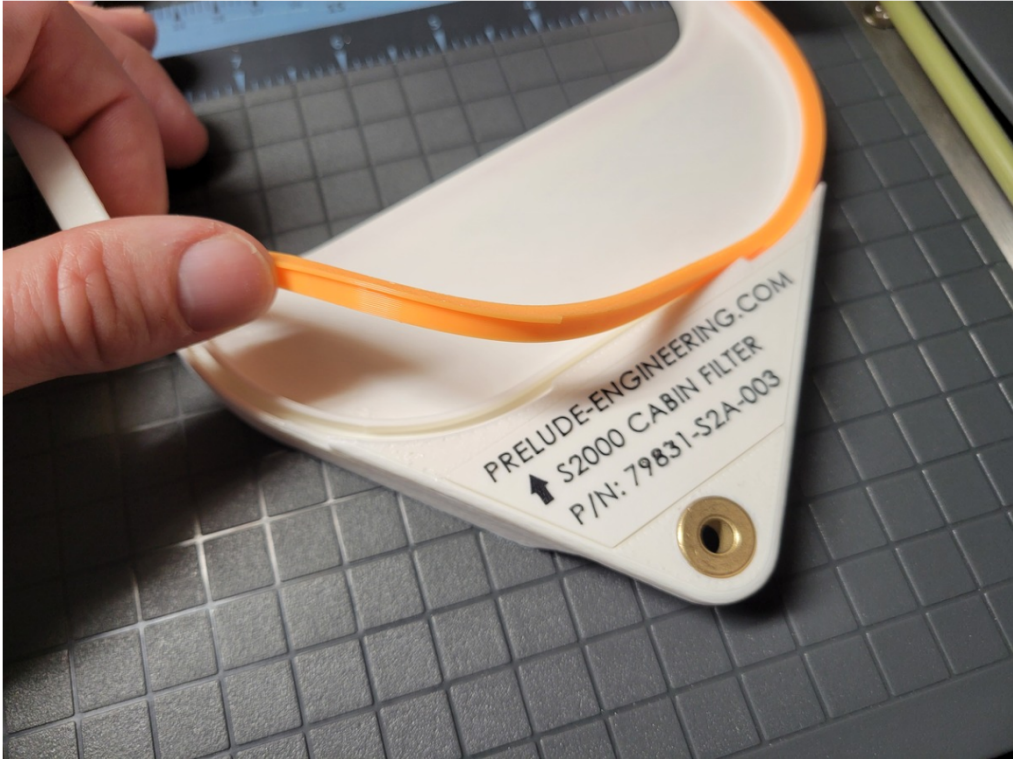
Reach in and lift the old inlet cover up until there is clearance to pull it out. It might be stuck a bit.

Part of the cowl cover may also interfere with lifting the inlet cover at the rear. You can reach in and try to push it out of the way or trim it a bit with the razor for more clearance (don't trim more than needed).

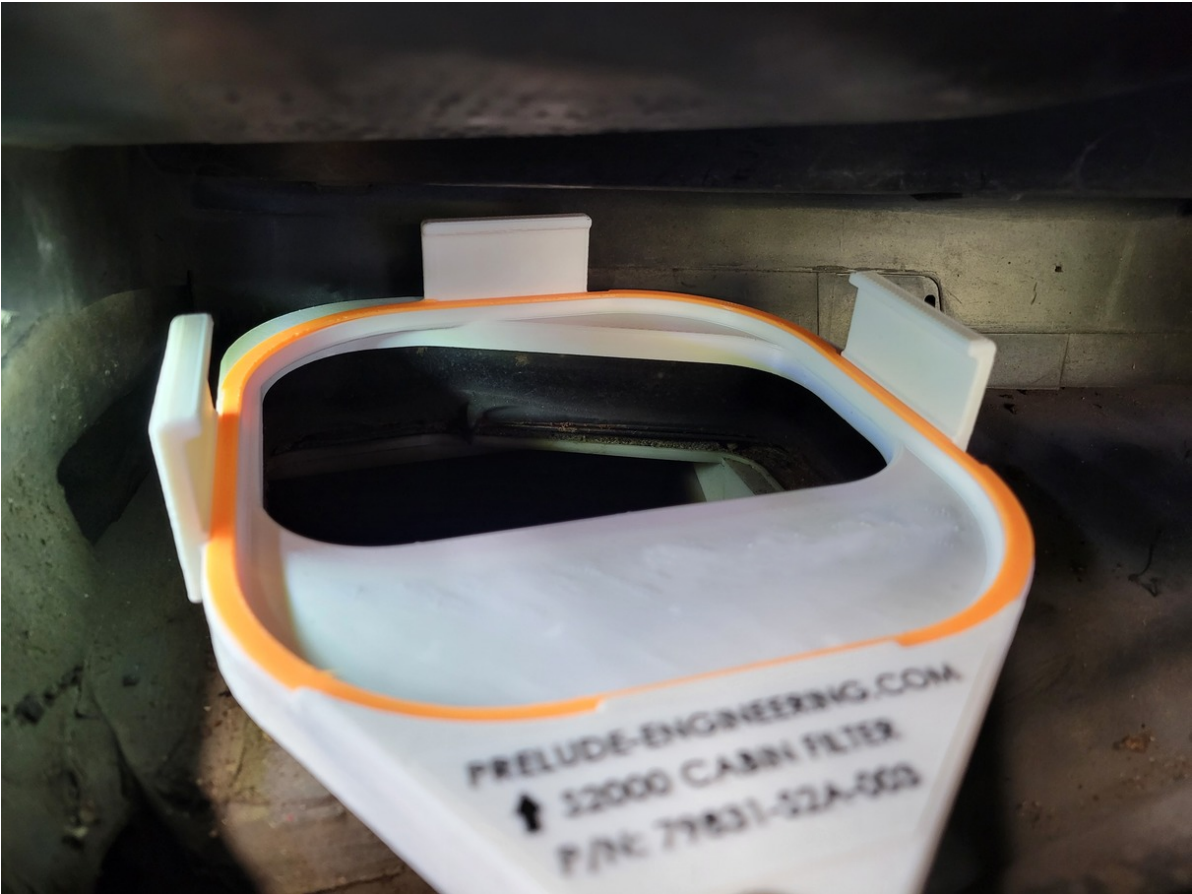




The new cabin filter housing should have shipped with the gaskets in place but if they fell out during shipping then put them in place now:



Wipe any debris off of the lip of the blower inlet and place the new filter housing in place. Make sure it fully seats so that the lower gasket is resting on the blower inlet lip:



This bit is slightly tricky. Use the box end of a 10mm wrench to cradle the included nut.



Hold the nut under the bracket then thread the bolt into the nut from above with your other hand:



Finally, tighten the bolt using a small ratchet while still holding the nut from below with the wrench:



After tightening the bolt reach in and feel that the new filter housing is still seated against the blower inlet lip.

NOTE: You probably won't need to do this next step, but just in case:

If it's not seated then you can pull the filter housing out again and slightly bend the mounting tab in the direction needed for the filter housing to fully seat.

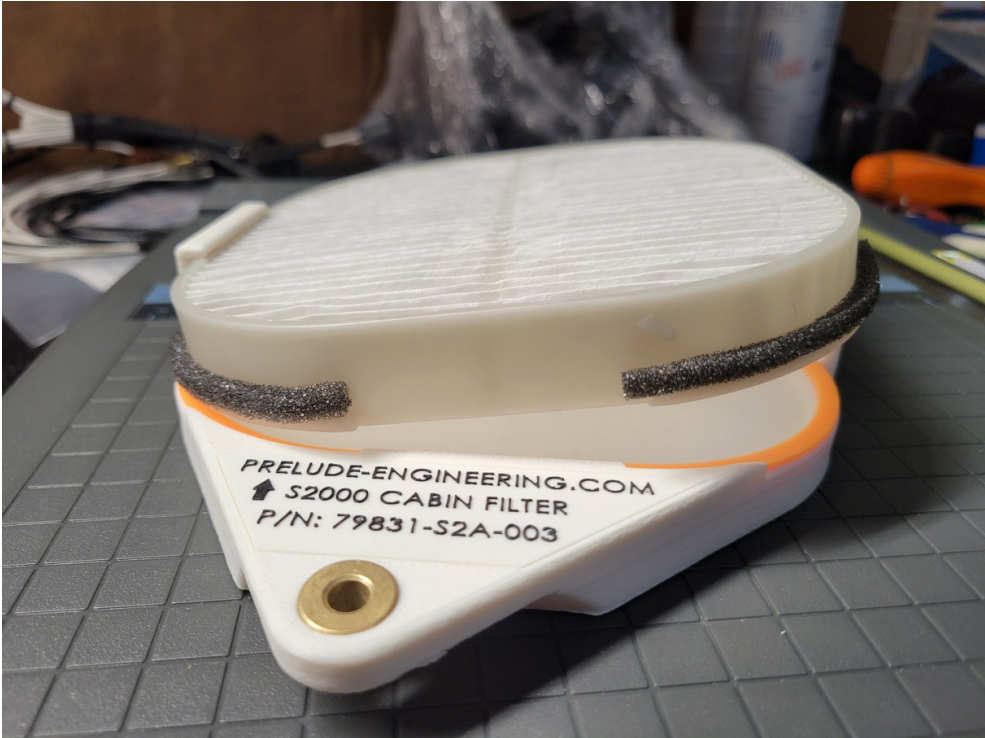


When you go to place the S2000 cabin filter into the housing keep in mind that it is rectangle shaped, not square. If it seems too wide don't try to force it. Rotate it 90 degrees:

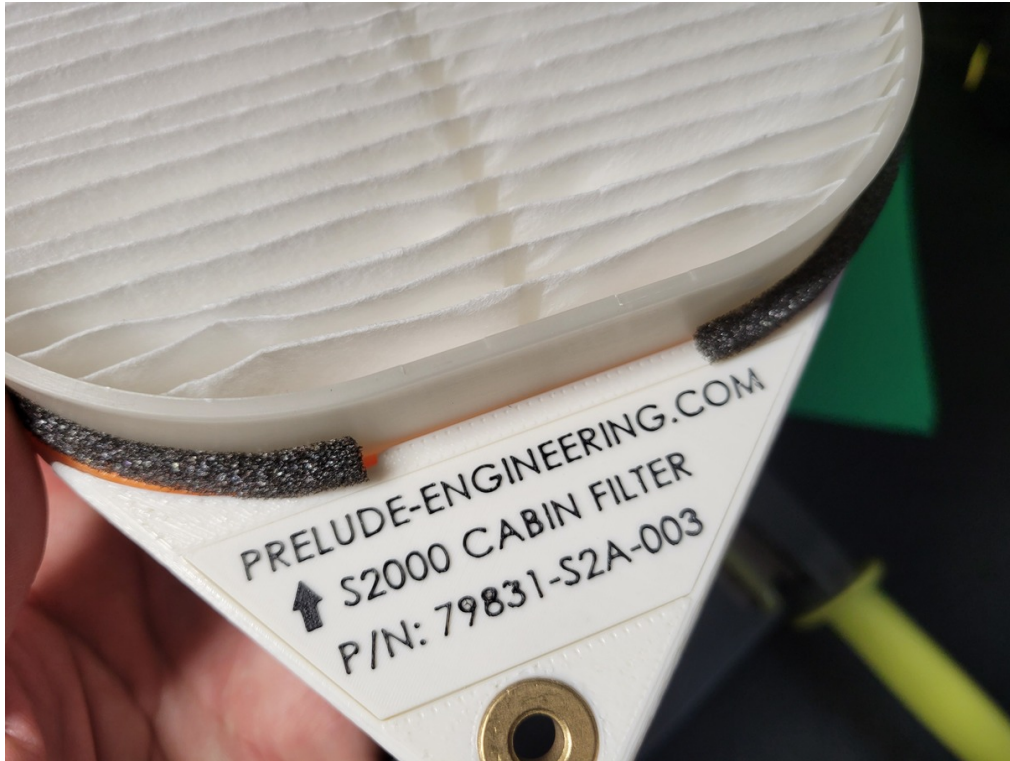


If you try to slide the filter in from the front it may work but it also likes to catch on the seal and not go all the way in.

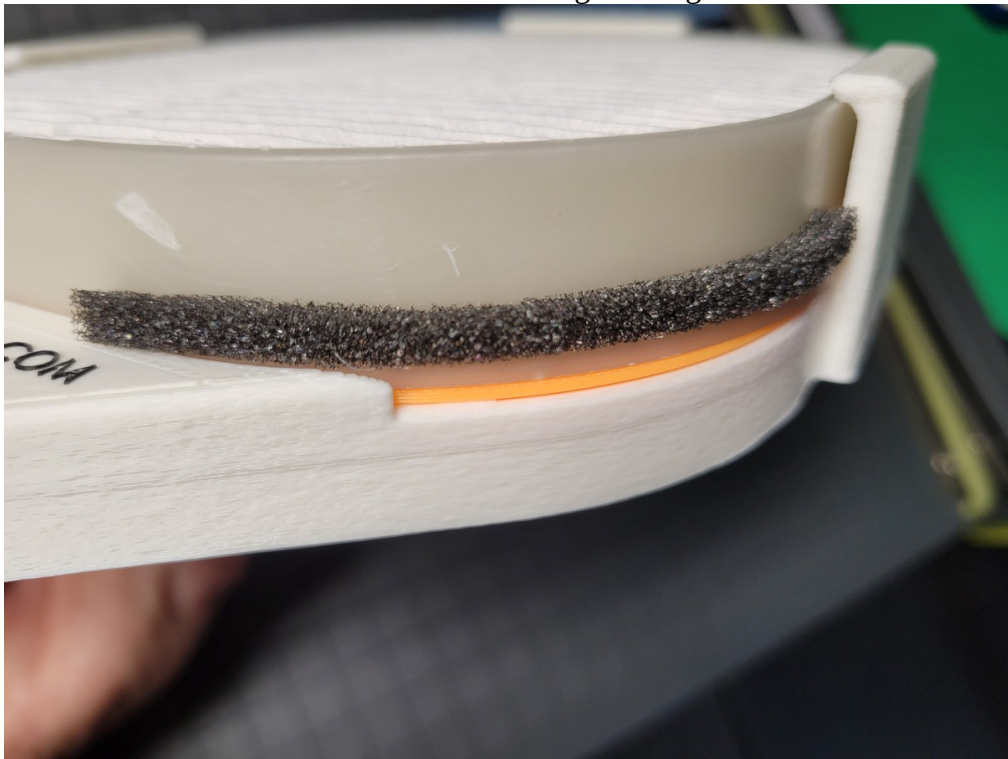
The best way to do it is set it on the top as far back as it will go, hook one side under one of the clips, then push the other side down into place:



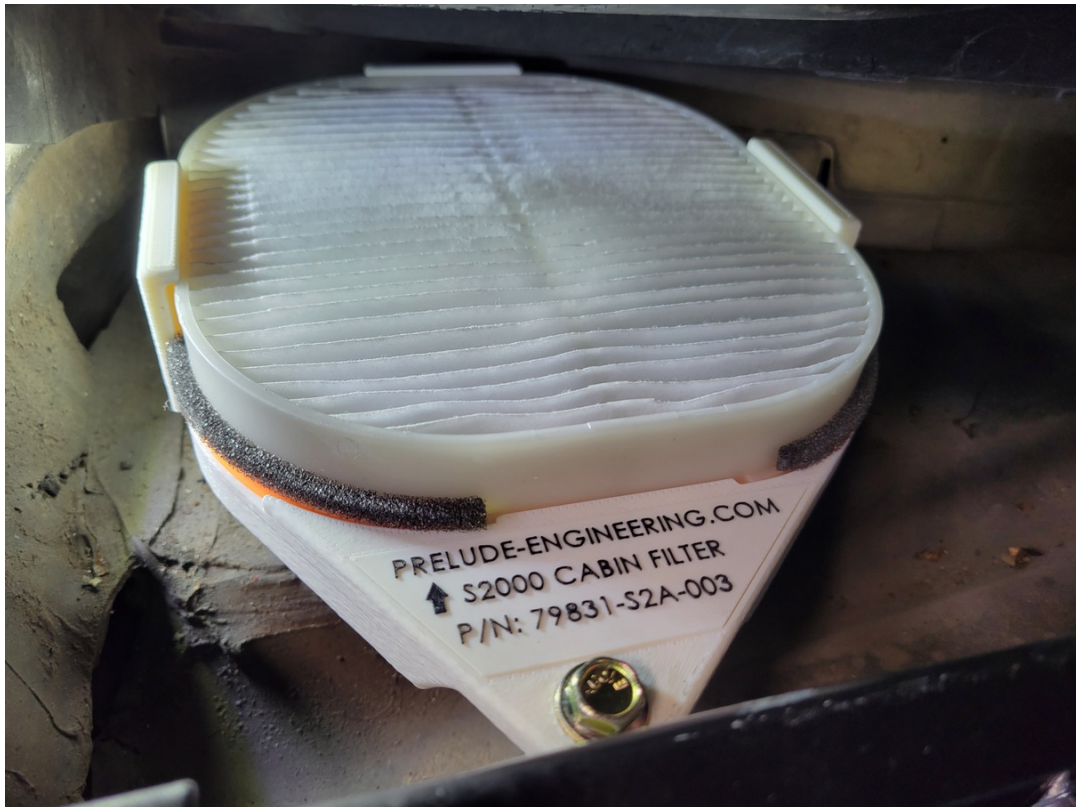
Once it is seated under the side clips push the filter to the rear. It will go under the rear clip and also seat at the front:



The filter should be resting on the gasket:



The cabin filter has an airflow direction. Make sure the arrow on it is pointing down into the blower.



Now you can secure the cowl in place again and reinstall the rear hood seal. Installation complete.



