



88-91 K-Swap Brake Proportioning Valve Relocation Bracket



Installation Instructions

(V1)

This bracket will help you secure the brake proportioning valve further back along the shock tower and provide clearance for the K-series valve cover and VTEC solenoid.

You will need to push the rear wheel brake lines into the interior. This will require removing the glove box, AC evaporator, and blower motor (see the factory service manual for these steps).

You should now be able to see the firewall sound barrier. Peel back the top corner to see where the brakes lines enter the interior:



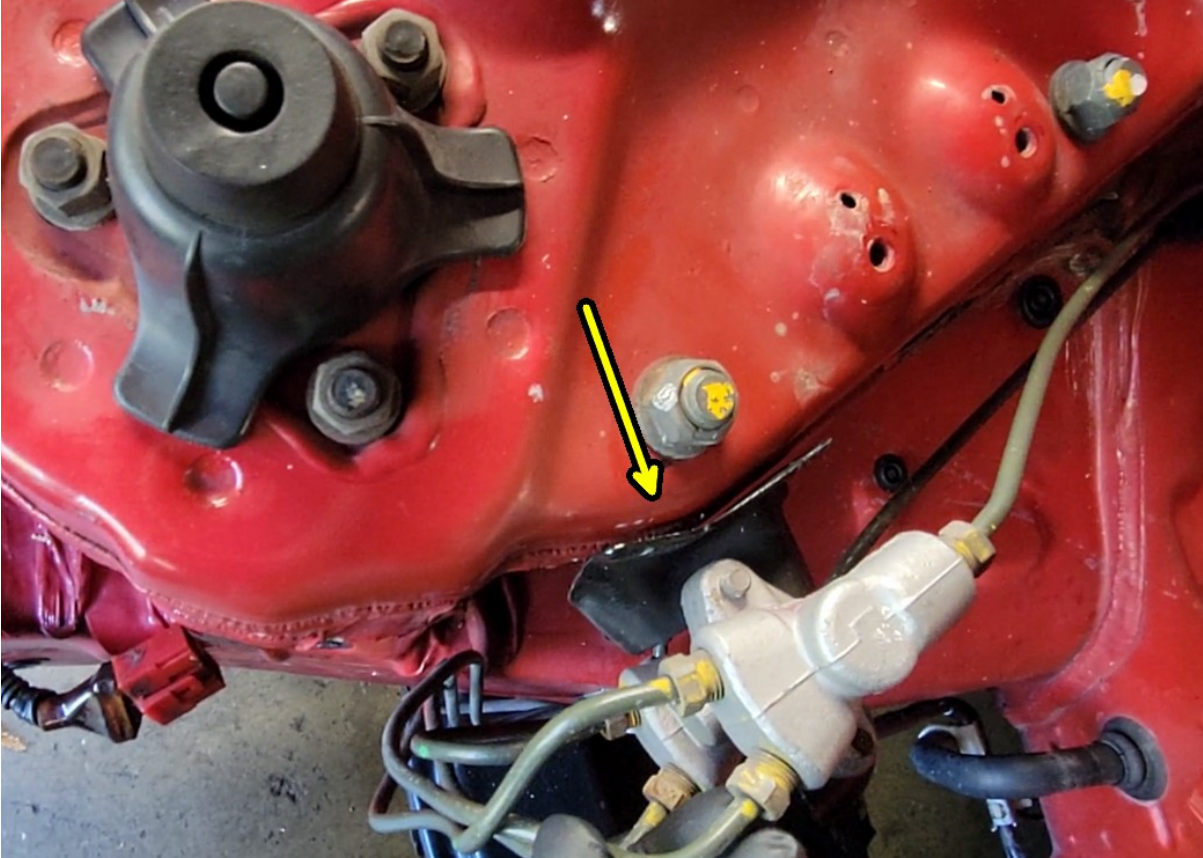
Go to the engine bay and unbolt the brake proportioning valve from the shock tower.

Use a folded rag as a cushion and push the proportioning valve towards the firewall.

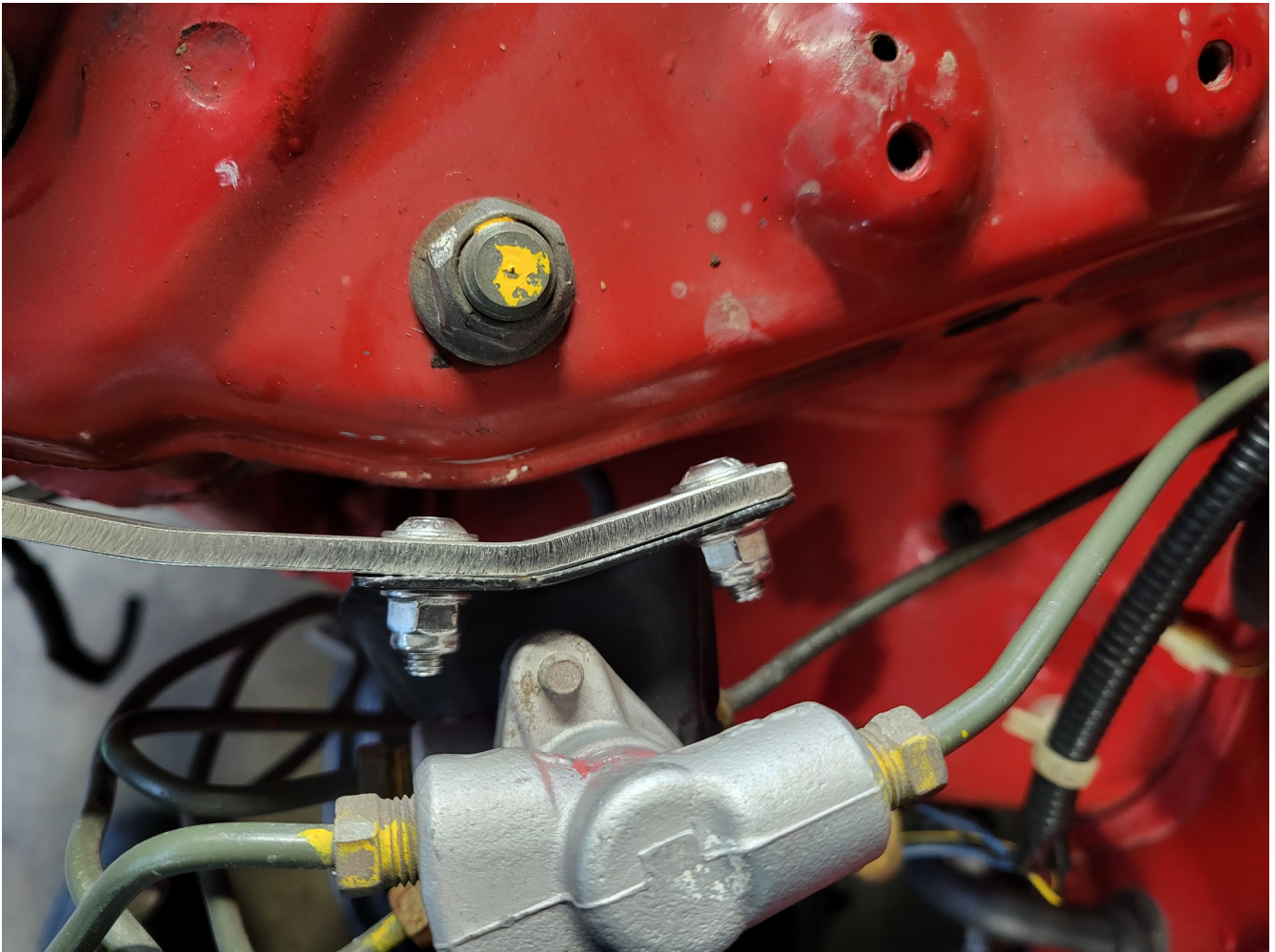
It takes a decent amount of force, just keep giving it strong pushes and the lines will bend more each time:



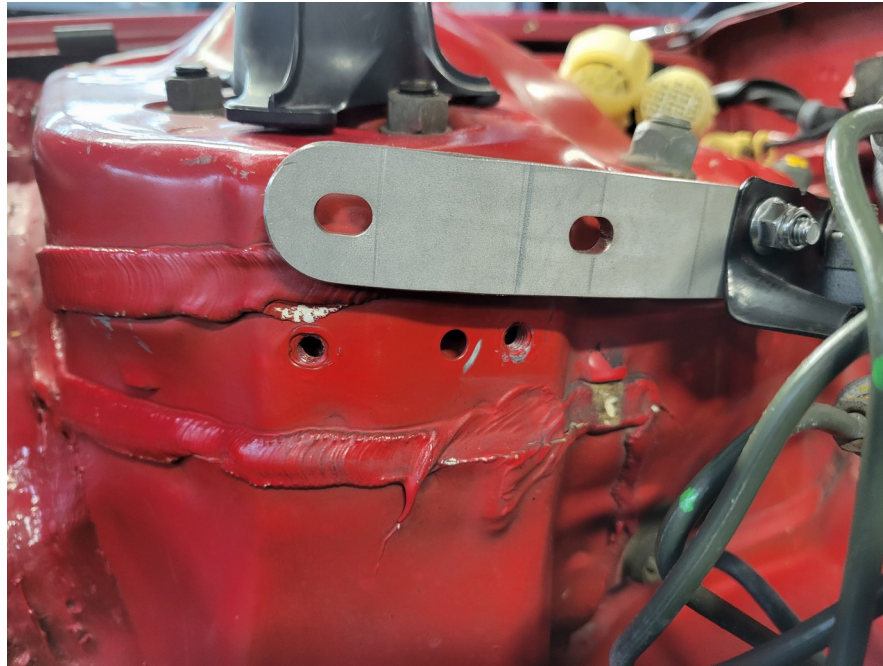
Push the valve back until its black mounting bracket matches up with the bend in the shock tower sheet metal like shown here:



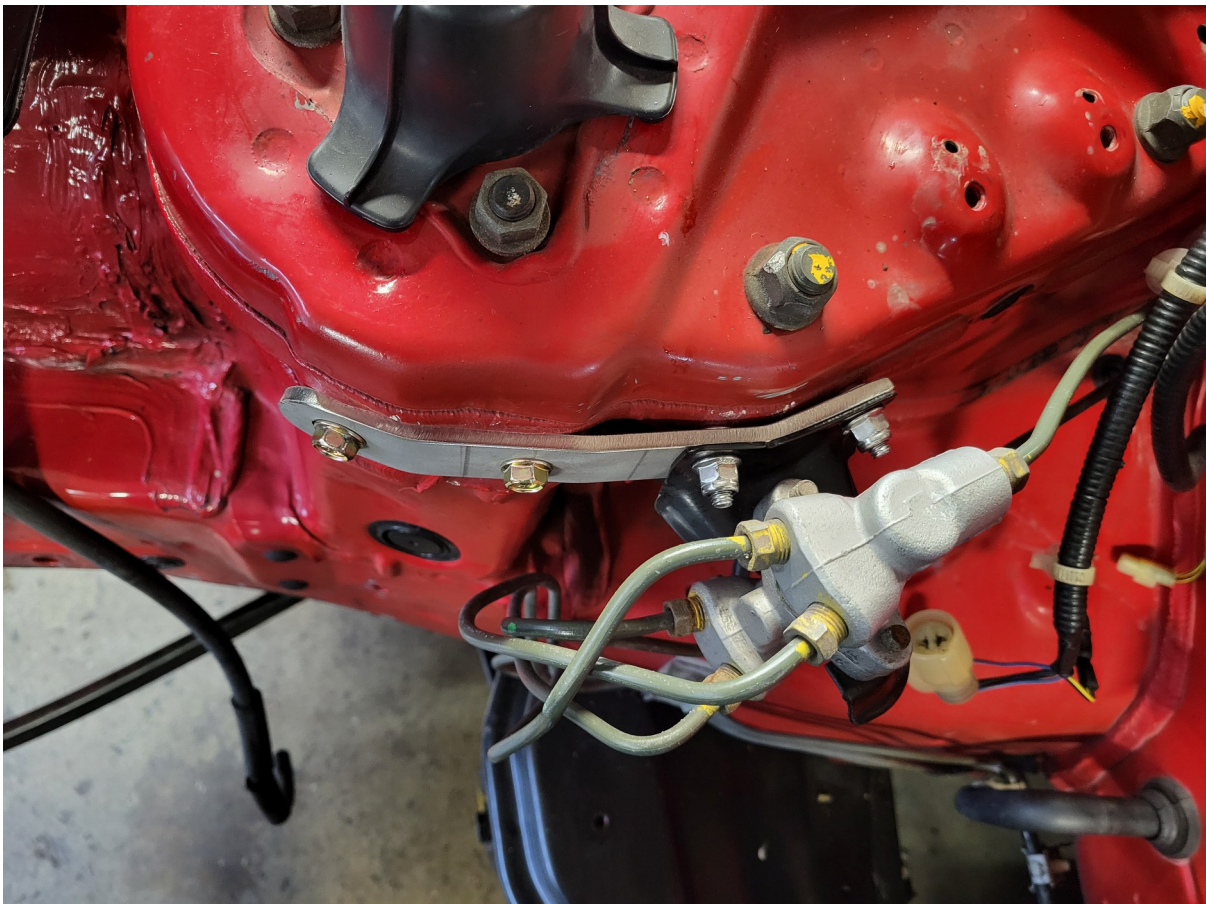
Install the relocation bracket on the proportioning valve bracket using the low-profile Allen bolts and nylon locking nuts like this:



The front bracket holes probably won't line up perfectly at this point. Just bend the proportioning valve as needed to get them lined up.



After that install the bracket bolts to secure everything to the shock tower again:



Tweak the shape of the brake lines on the front of the proportioning valve so that they don't touch each other or the chassis.

Go into the interior and bend the brake lines up, around, then down to account for the extra length you added into the interior. You need to keep them tight against the firewall so that the blower has room to be reinstalled:



It won't look pretty and will probably take a few tries until you get them in a good position. Just be careful not to kink the lines.

Once you are satisfied with the bending use some fleece/fabric tape on any portion of the lines that may touch each other or the firewall (to stop and rubbing, rattles, etc.).



After that you are finished and can reinstall the blower and other components:

